

# CARBONITE

- GLOBAL MEMORY CONTROL**
- MemoryAI™ Recalls make for impressive productions

Superb ergonomics, smooth and precise operation multi-MLE performance in a compact design. **Just what you'd expect from Ross.**

- MULTI-PURPOSE BUTTONS!**
- Quickly select patterns, DVE effects, memories, media, or menu functions

- POWERFUL MACRO EDITING!**
- Easy to create, amazing to use

- KEY TYPE SELECTIONS!**
- Choose between self-keying, linear keying, chroma keying, and DVE picture in picture keying

- TOP BUS DELEGATION!**
- Reassign the top bus to keyer, aux bus, or macro recall control

- SOURCE MNEMONICS!**
- Name sources, select text size, choose color and even invert

- MACRO NAMES!**
- Give macros names for worry-free recall during live productions

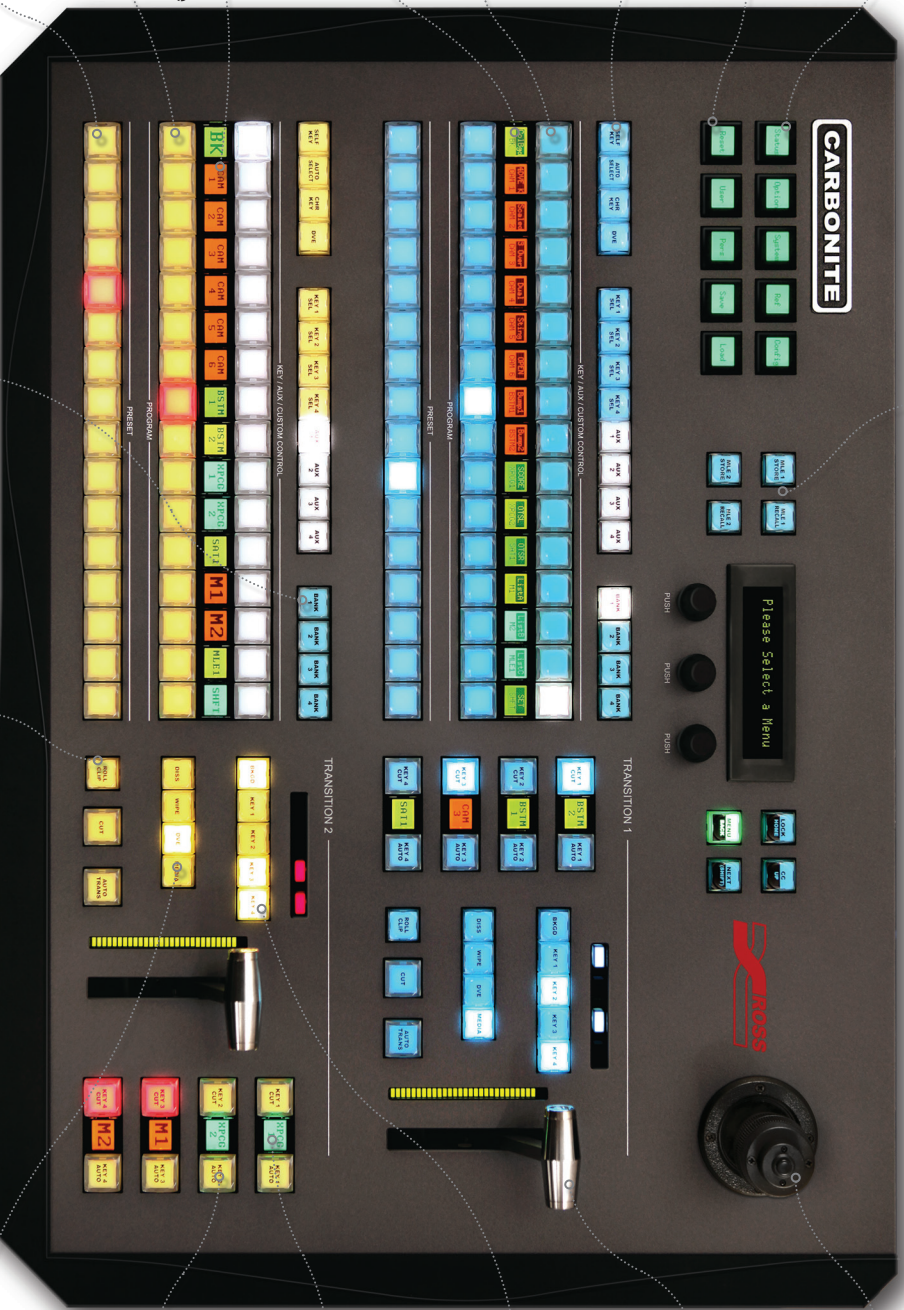
- PANEL GLOW!**
- User-adjustable for various lighting environments

- 16-WIDE SELECTOR BUS!**
- Access to every internal and external source in the switcher

- CUSTOM CONTROL BANK SELECT**
- Easy selection of up to 196 powerful Custom Control Macro's

- ROLL CLIP BUTTON**
- For playback control within transitions

- ADVANCED TRANSITION TYPE SELECTION**
- Choose from dissolve, wipe, DVE, and MediaWipe™ Transitions



- HIGH END 3-AXIS JOYSTICK**
- Position wipes, patterns, washes, camera control and DVE effects

- LEGENDARY ROSS FADER**
- Robust and Guaranteed for Life

- TRUE NEXT TRANSITION AREA**
- Rapid selection of all keyers with full preview

- SOURCE MNEMONICS**
- Show current source names for every keyer

- DEDICATED CUT AND AUTO TRANS BUTTONS**
- Rapid live keyer control